

HSP-40-226

ppm

399.65 MHz

SDBS-¹H NMR SDBS No. 1721 HSP-40-226

C₁₃ H₁₀

fluorene

1.60 mg : 0.5 ml CDCl₃

(The features between 7 and 8 ppm are labeled "d" for doublet and "t" for triplet, respectively)

399.65 MHz

SDBS-¹H NMRSDBS No. 1721HSP-40-226

C₁₃ H₁₀

1.60 mg : 0.5 ml CDCl₃

fluorene

Hz	ppm	Int.
3114.62	7.794	535
3111.08	7.785	63
3107.06	7.775	597
3016.48	7.548	412
3015.63	7.546	493
3014.53	7.543	361
3012.21	7.538	66
3009.03	7.530	480
3008.30	7.528	558
3007.08	7.525	408
3004.52	7.518	49
2952.76	7.389	250
2952.27	7.388	228
2951.66	7.386	222
2949.34	7.380	57
2948.12	7.377	55
2945.31	7.370	574
2944.82	7.369	517
2944.21	7.367	499
2941.53	7.361	59
2940.80	7.359	59
2937.87	7.352	386
2937.38	7.350	335
2936.65	7.349	311
2923.10	7.315	528
2921.88	7.312	520
2919.92	7.307	51
2919.31	7.305	52
2918.46	7.303	59
2917.85	7.302	71
2915.77	7.296	745
2914.55	7.293	690
2911.87	7.287	50
2910.52	7.283	48
2908.33	7.278	296
2907.10	7.275	262
1554.44	3.890	1000

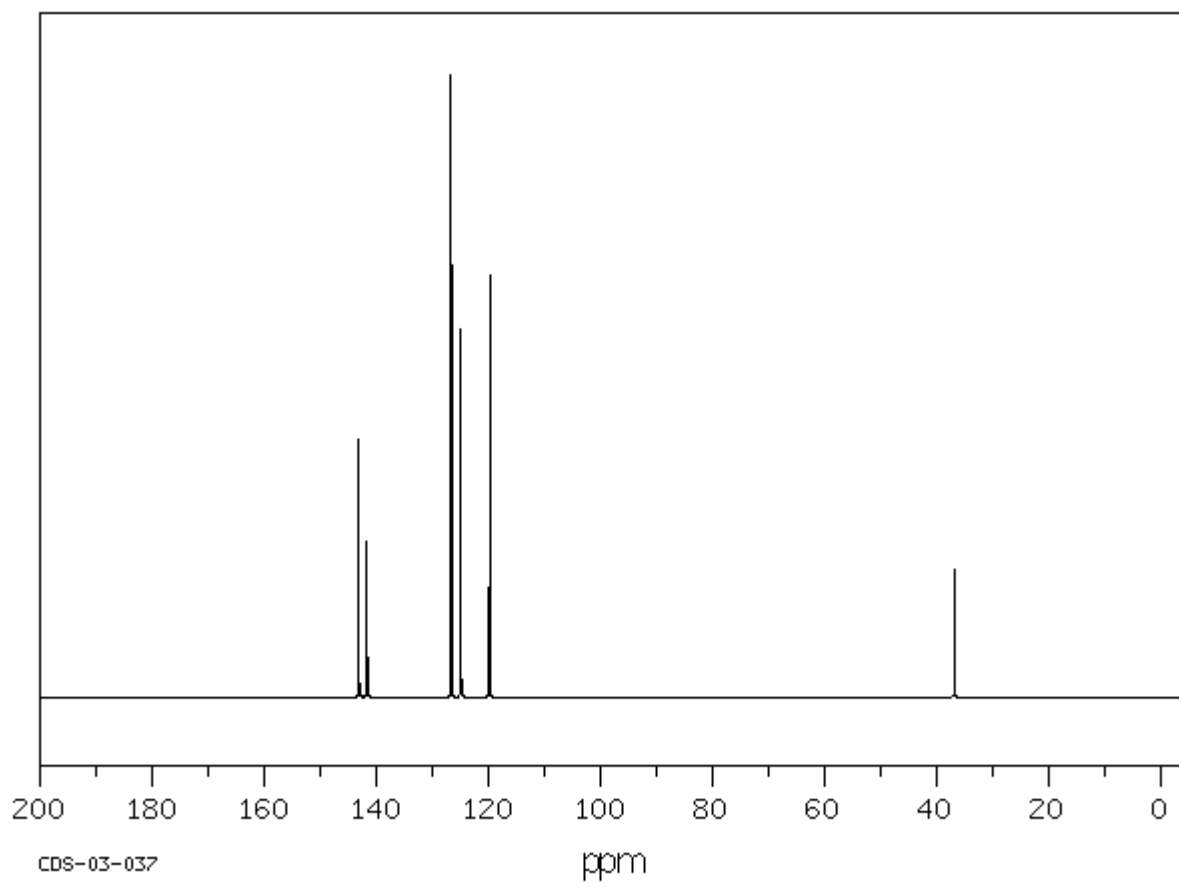
SDBS-¹³C NMR SDBS No. 1721CDS-03-037

C₁₃H₁₀

fluorene

25.16 MHz

14.2 mol% in CDCl₃



ppm Int.

143.14 413

141.67 249

126.62 1000

(the feature at 126.62 ppm is two overlapping peaks)

124.92 592

119.79 677

36.80 204